

# SPEC SHEET + MEASUREMENTS



## OGIO® Envision Polo. OG154

### Product photo



OGIO envisioned this high-performance polo to set a new standard in corporate style. Designed with stretch, moisture wicking and inherent UV ray resistance, this elevated polo is exceptional for work or play.

- 4.9-ounce, 88/12 nylon/spandex micropique with stay-cool wicking technology
- UPF rating of 30
- OGIO heat transfer label for tag-free comfort
- Self-fabric collar
- OGIO neck tape
- 3-snap placket
- Dyed-to-match O OGIO icon snaps (White has black snaps)
- Modified raglan sleeves
- Tonal raised O OGIO icon heat transfer on left sleeve (White has black logo)

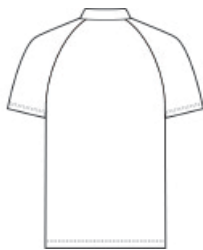
### CARE INSTRUCTIONS

Machine Wash Cold With Like Colors. Do Not Use Fabric Softener. Do Not Bleach. Tumble Dry Low. Remove Promptly. Cool Iron If Necessary.

### Sketches



front



back

# SPEC SHEET + MEASUREMENTS



OGIO® Envision Polo. OG154

## PRODUCT MEASUREMENTS

|                                | XS     | S      | M      | L      | XL     | 2XL    | 3XL    | 4XL    |
|--------------------------------|--------|--------|--------|--------|--------|--------|--------|--------|
| Body Length at Back            | 27     | 28     | 29     | 30     | 31     | 32     | 32 1/2 | 33     |
| Chest                          | 18     | 19 1/2 | 21     | 22 1/2 | 24     | 25 1/2 | 27 1/2 | 29 1/2 |
| Sleeve Length from Center Back | 17 7/8 | 18 3/8 | 18 3/4 | 19 1/4 | 19 5/8 | 20 1/8 | 20 5/8 | 21 1/4 |

**Body Length at Back:** Measured from high point shoulder to finished hem at back.

**Chest:** Measured across the chest one inch below armhole when laid flat.

**Sleeve Length from Center Back:** Measure from Center Back neck to shoulder point to sleeve hem.

## SIZE CHARTS

|       | XS    | S     | M     | L     | XL    | 2XL   | 3XL   | 4XL   |
|-------|-------|-------|-------|-------|-------|-------|-------|-------|
| Chest | 32-34 | 35-37 | 38-40 | 41-43 | 44-46 | 47-49 | 50-53 | 54-57 |

# SPEC SHEET + MEASUREMENTS



OGIO® Envision Polo. OG154

## HOW TO MEASURE

---



### CHEST

Measure under the arm and around the fullest part of the chest with arms down, keeping tape horizontal.

## COLORS

---



Blacktop  
PMS BLACK  
C



Deep Rose  
PMS 7639C



Force Blue  
PMS 4153C



River Blue  
Navy  
PMS 533C



Rogue Grey  
PMS 4195C



White